

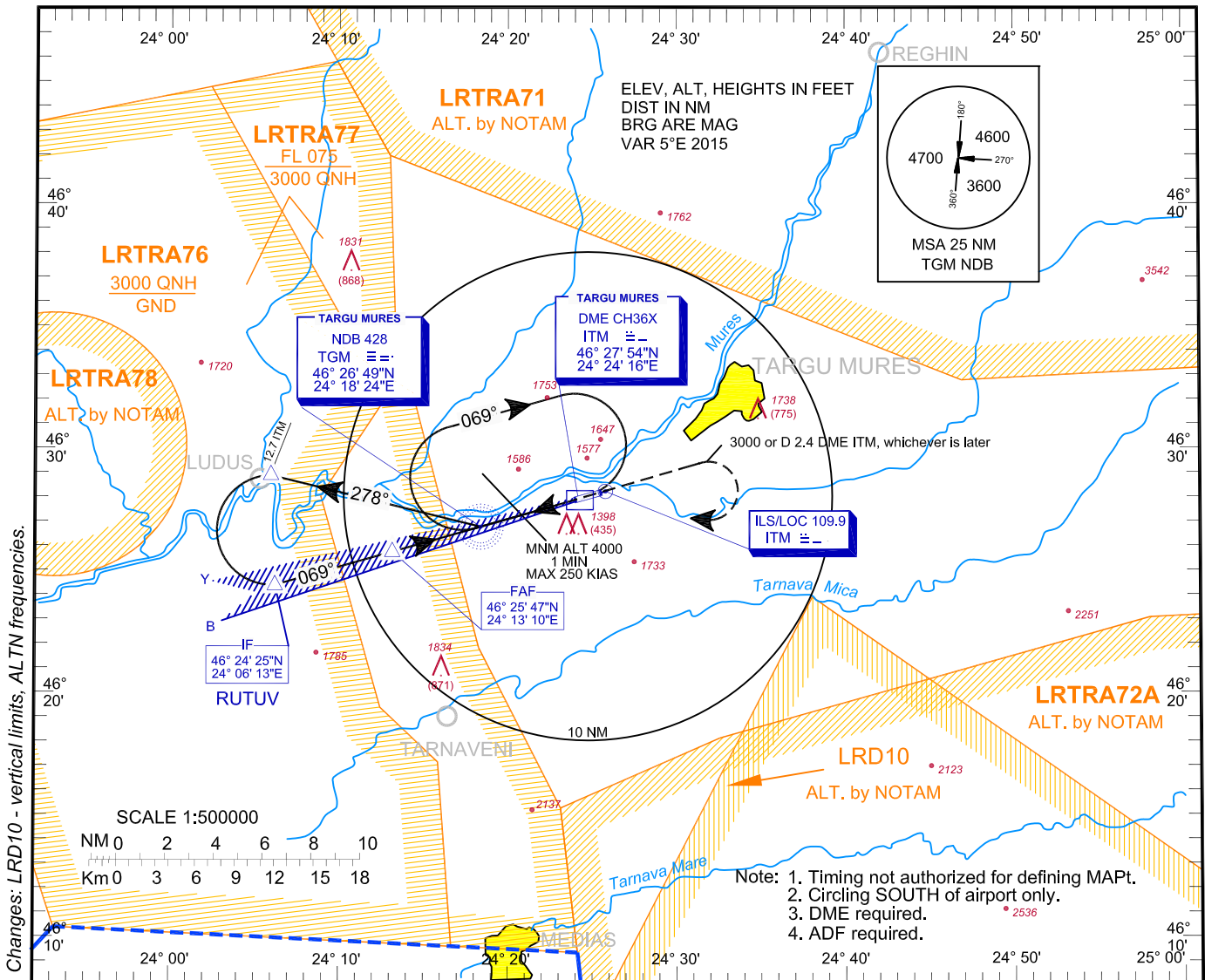
**INSTRUMENT
APPROACH
CHART - ICAO**

**AERODROME
ELEV. 963 ft
HEIGHTS RELATED
TO AD ELEV**

TARGU MURES ATIS 125.950
NAPOC APPROACH 126.430
NAPOC NORTH APPROACH 126.430
NAPOC SOUTH APPROACH 119.680

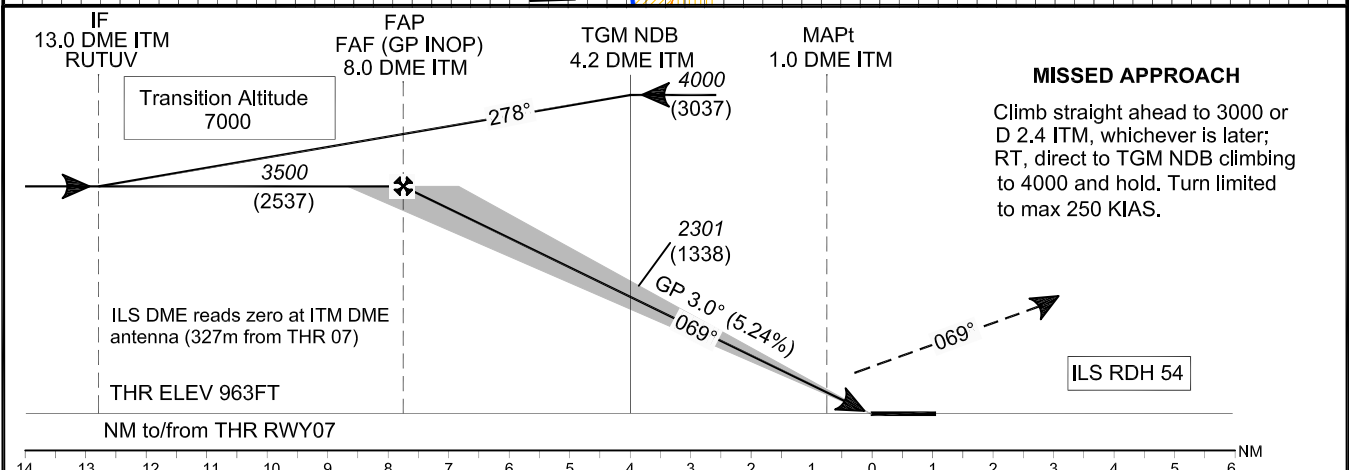
TARGU MURES TOWER 119.180
TARGU MURES TOWER ALTN 120.325

**TÂRGU MUREȘ/
Transilvania-
Târgu Mureș (LRTM)
ILS RWY 07 CAT C / D**



Changes: LRD10 - vertical limits, ALTN frequencies.

- Note: 1. Timing not authorized for defining MAPt.
2. Circling SOUTH of airport only.
3. DME required.
4. ADF required.



MISSED APPROACH

Climb straight ahead to 3000 or D 2.4 ITM, whichever is later; RT, direct to TGM NDB climbing to 4000 and hold. Turn limited to max 250 KIAS.

OCA(H)	C	D
Straight-in	1137 (174)	1150 (187)
Approach	1042 (79)	1061 (98)
	1500 (537)	
Circling	2200	2300

GS	kts	100	120	140	160
FAF-MAPT 7.0 NM	min:s	4:11	3:29	2:59	2:37
Rate of descent	ft/min	531	637	743	849

Dist to DME ITM	NM	7	6	5	4.2 TGM	4	3	2
Dist to THR 07	NM	6,8	5,8	4,8	4,0	3,8	2,8	1,8
Altitude (Height)	ft	3190 (2227)	2871 (1908)	2553 (1590)	2301 (1338)	2234 (1271)	1916 (953)	1597 (634)

For data tabulation see verso.

**TÂRGU MUREŞ / TRANSILVANIA - TÂRGU MUREŞ (LRTM)
ILS CAT C, D RWY 07**

AERONAUTICAL DATA TABULATION

ILS Approach CAT C, D to RWY 07	
Fix/Point	Coordinates
TGM NDB (IAF)	46°26'48.9"N 024°18'23.7"E
12.7 D ITM – BRG 278.49° TGM outbound	46°28'53.9"N 024°05'57.7"E
RUTUV / 13.0 D ITM (IF) – BRG 68.78°TGM	46°24'24.7"N 024°06'13.1"E
8.0 D ITM (FAF GP INOP) – BRG 68.89°TGM	46°25'47.2"N 024°13'09.9"E
1.0 D ITM (MAPT)	46°27'41.6"N 024°22'51.5"E
THR RWY 07	46°27'55.01"N 024°24'00.25"E
ITM LOC	46°28'15.1"N 024°25'43.3"E