

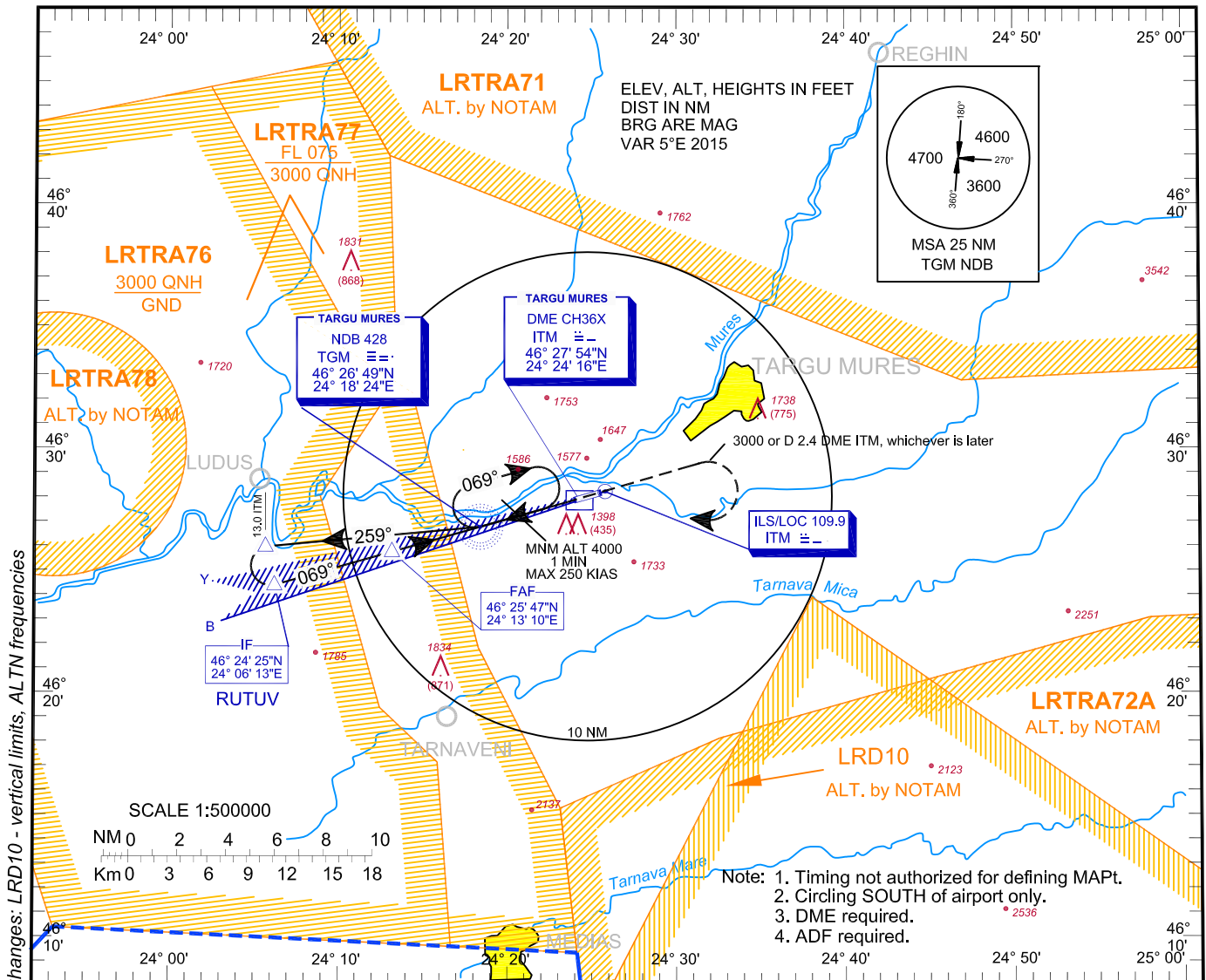
**INSTRUMENT
APPROACH
CHART - ICAO**

**AERODROME
ELEV. 963 ft**
HEIGHTS RELATED
TO AD ELEV

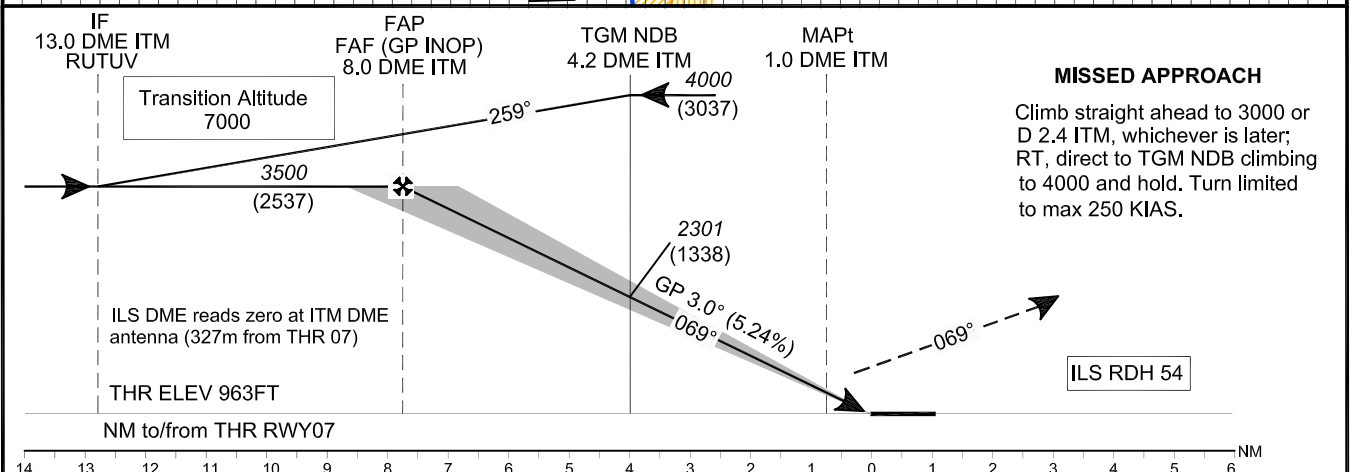
NAPOC APPROACH 126.430
NAPOC APPROACH ALTN 127.275
NAPOC NORTH APPROACH 126.430
NAPOC NORTH APPROACH ALTN 127.275
NAPOC SOUTH APPROACH 119.680
NAPOC SOUTH APPROACH ALTN 127.275

TARGU MURES TOWER 119.180
TARGU MURES TOWER ALTN 120.325
TARGU MURES ATIS 125.950

**TÂRGU MUREȘ/
Transilvania-
Târgu Mureș (LRTM)
ILS RWY 07 CAT A / B**



Changes: LRD10 - vertical limits, ALTN frequencies



OCA/(H)		A	B
Straight-in Approach	ILS CAT I	1111 (148)	1124 (161)
	ILS CAT II	1015 (52)	1029 (66)
	GP INOP	1500 (537)	
Circling		1730	1900

GS	kts	70	90	100	120
FAF-MAPT 7.0 NM	min:s	5:58	4:39	4:11	3:29
Rate of descent	ft/min	372	478	531	637

Dist to DME ITM	NM	7	6	5	4.2 TGM	4	3	2
Dist to THR 07	NM	6.8	5.8	4.8	4.0	3.8	2.8	1.8
Altitude (Height)	ft	3190 (2227)	2871 (1908)	2553 (1590)	2301 (1338)	2234 (1271)	1916 (953)	1597 (634)

For data tabulation see verso.

**TÂRGU MUREŞ / TRANSILVANIA - TÂRGU MUREŞ (LRTM)
ILS CAT A, B RWY 07**

AERONAUTICAL DATA TABULATION

ILS Approach CAT A, B to RWY 07	
Fix/Point	Coordinates
TGM NDB (IAF)	46°26'48.9"N 024°18'23.7"E
13.0 D ITM – BRG 259.47° TGM outbound	46°25'59.1"N 024°05'41.1"E
RUTUV / 13.0 D ITM (IF) – BRG 68.78° TGM	46°24'24.7"N 024°06'13.1"E
8.0 D ITM (FAF GP INOP) - BRG 68.89° TGM	46°25'47.2"N 024°13'09.9"E
1.0 D ITM (MAPT)	46°27'41.6"N 024°22'51.5"E
THR RWY 07	46°27'55.01"N 024°24'00.25"E
ITM LOC	46°28'15.1"N 024°25'43.3"E