

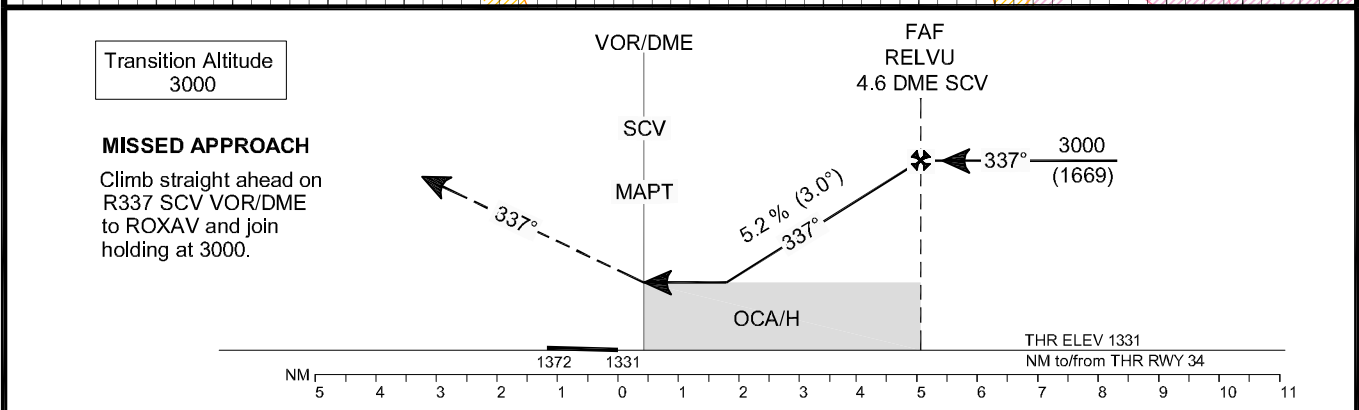
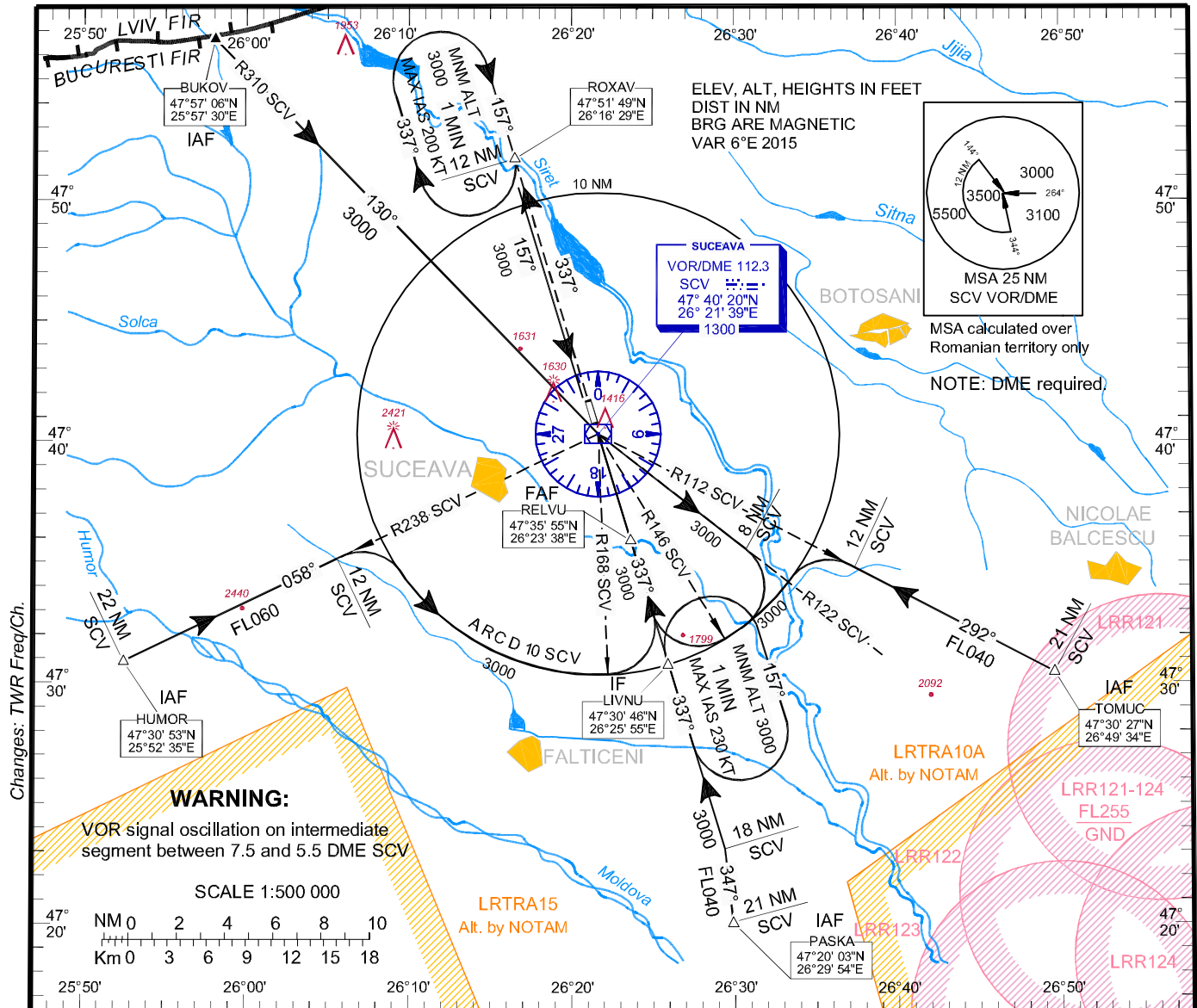
**INSTRUMENT APPROACH
CHART - ICAO**

AERODROME ELEV. 1375 ft
HEIGHTS RELATED TO
THR RWY 34 - ELEV 1331

SUCEAVA/Ştefan cel Mare (LRSV)

**VOR
RWY 34**

SUCEAVA TWR 129.955
SUCEAVA TWR ALTN 118.300



MISSED APPROACH
Climb straight ahead on R337 SCV VOR/DME to ROXAV and join holding at 3000.

	70	90	100	120	140	160
FAF-MAPT 4.6 NM	min:s 3:58	3:05	2:46	2:19	1:59	1:44
Rate of descent (5.2%)	ft/min 372	478	531	637	743	849

Timing not authorized for defining MAPT.

OCA/H	A	B	C	D
Straight-in Approach	1670 (339)			
Circling	1930	2030		

Dist. to SCV DME	NM	1.0	2.0	3.0	4.0
Dist. to THR 34	NM	1.5	2.5	3.5	4.5
Altitudes (Heights)	FT	1843 (512)	2161 (830)	2480 (1149)	2798 (1467)

**SUCEAVA / Ștefan cel Mare (LRSV)
VOR RWY 34**

AERONAUTICAL DATA TABULATION

VOR approach to RWY 34 from BUKOV, TOMUK, PASKA, HUMOR	
Fix/Point	Coordinates
BUKOV (IAF) – BRG 305.55°/23.37 NM SCV	47°57'06.0"N 025°57'30.0"E
TOMUC (IAF) – BRG 111.65°/21.34 NM SCV	47°30'26.9"N 026°49'34.3"E
PASKA (IAF) – BRG 158.49°/21.05 NM SCV	47°20'03.3"N 026°29'53.9"E
HUMOR (IAF) – BRG 237.98°/21.83 NM SCV	47°30'53.1"N 025°52'35.2"E
12.0 D SCV – BRG 111.50°/12.00 NM SCV	47°34'47.4"N 026°37'22.6"E
18.0 D SCV – BRG 157.11°/18.00 NM SCV	47°23'07.0"N 026°29'19.3"E
12.0 D SCV – BRG 238.14°/12.00 NM SCV	47°35'09.4"N 026°05'39.0"E
10.0 D SCV – BRG 145.53°/10.00 NM SCV	47°31'32.2"N 026°28'38.9"E
10.0 D SCV – BRG 168.50°/10.00 NM SCV	47°30'23.3"N 026°23'01.6"E
LIVNU (IF) – BRG 157°/10.0 NM SCV	47°30'46.3"N 026°25'55.3"E
RELVU (FAF) - BRG 157°/4.6 NM SCV	47°35'55.2"N 026°23'37.6"E
SCV VOR/DME (MAPT)	46°40'20.4"N 026°21'39.0"E
THR RWY 34	47°40'46.24"N 026°21'27.35"E
ROXAV (MAHF) – BRG 337°/12.0 NM SCV	47°51'48.9"N 026°16'29.0"E
8.0 D SCV - BRG 122.42°/8.00 NM SCV	47°35'21.6"N 026°30'54.2"E

Final approach descent angle: 3.00°