

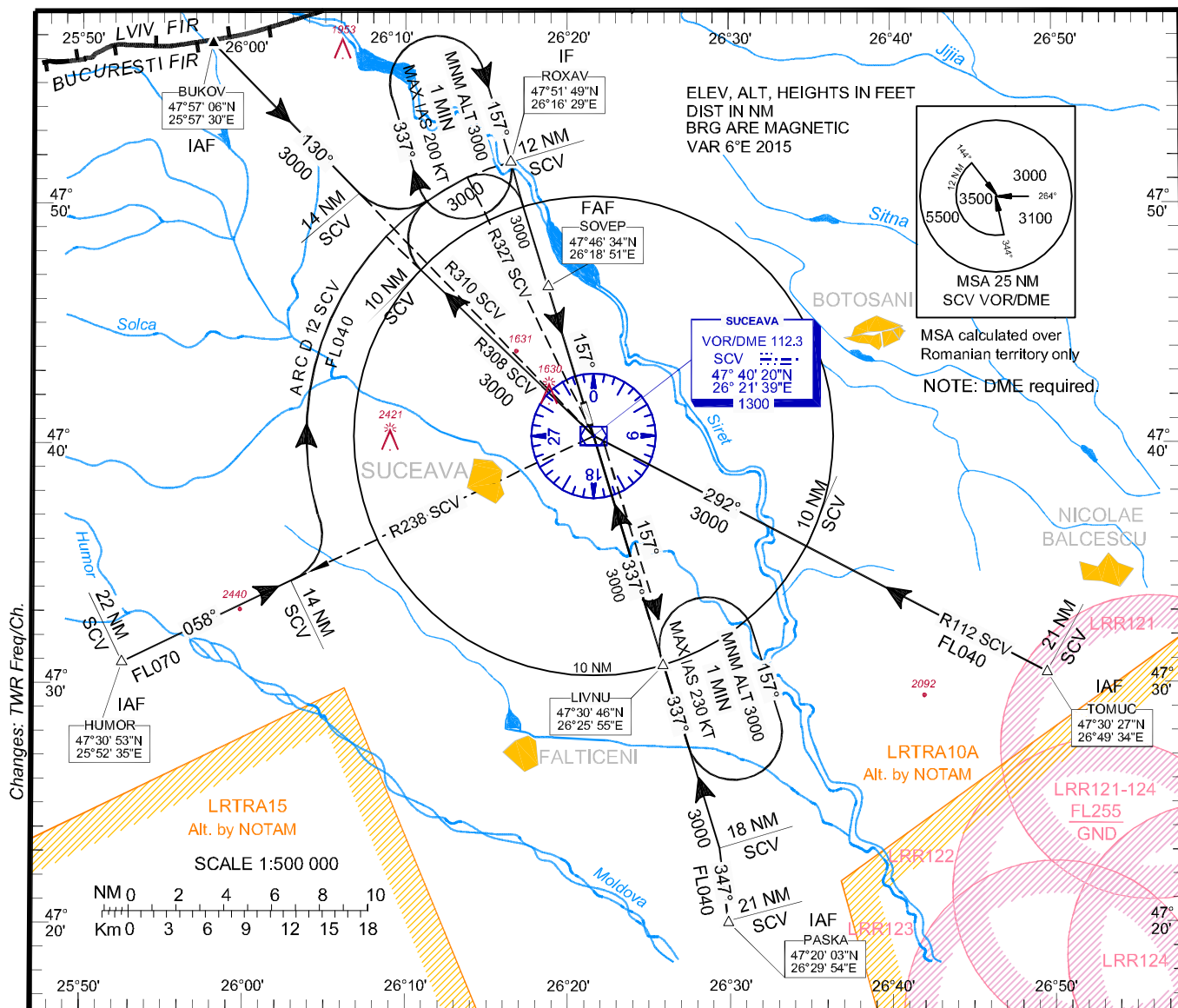
**INSTRUMENT APPROACH
CHART - ICAO**

AERODROME ELEV. 1375 ft
HEIGHTS RELATED TO
THR RWY 16 - ELEV 1372

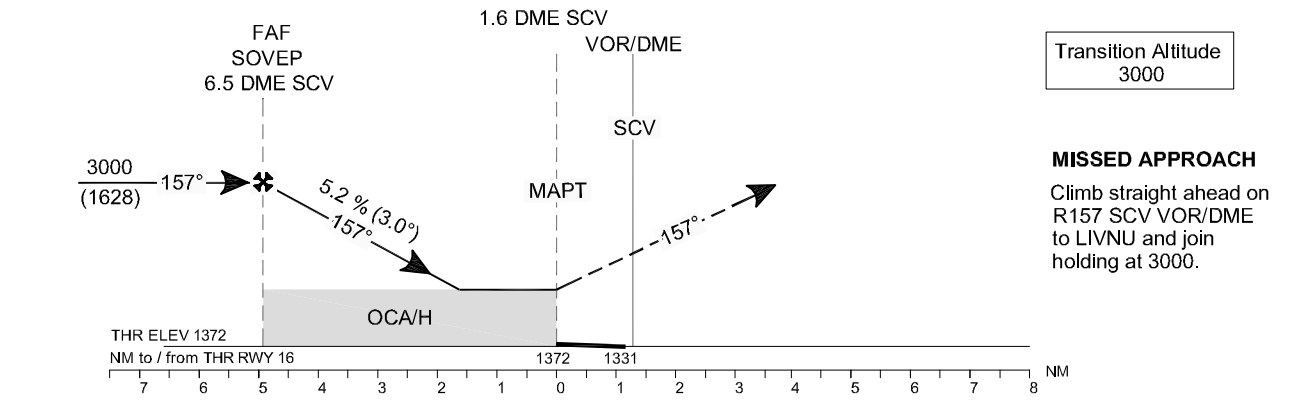
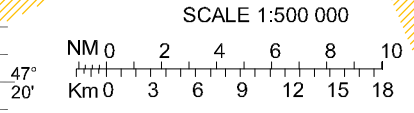
SUCEAVA/Ştefan cel Mare (LRSV)

SUCEAVA TWR 129.955
SUCEAVA TWR ALTN 118.300

**VOR
RWY 16**



Changes: TWR Freq/Ch.



OCA/H	A	B	C	D
Straight-in Approach	1770 (398)			
Circling	1930		2030	

	70	90	100	120	140	160
FAF-MAPT 4.9 NM	min:s 4:13	3:16	2:57	2:27	2:06	1:50
Rate of descent (5.2%)	ft/min 372	478	531	637	743	849

Timing not authorized for defining MAPT.

Dist to SCV DME	NM	3.0	4.0	5.0	6.0
Dist to THR 16	NM	1.4	2.4	3.4	4.4
Altitudes (Heights)	FT	1883 (511)	2201 (829)	2520 (1148)	2838 (1466)

SUCEAVA / Ștefan cel Mare (LRSV)
VOR RWY 16

AERONAUTICAL DATA TABULATION

VOR approach to RWY 16 from BUKOV, TOMUK, PASKA, HUMOR	
Fix/Point	Coordinates
BUKOV (IAF) – BRG 305.55°/23.37 NM SCV	47°57'06.0"N 025°57'30.0"E
TOMUC (IAF) – BRG 111.65°/21.34 NM SCV	47°30'26.9"N 026°49'34.3"E
PASKA (IAF) – BRG 158.49°/21.05 NM SCV	47°20'03.3"N 026°29'53.9"E
HUMOR (IAF) – BRG 237.98°/21.83 NM SCV	47°30'53.1"N 025°52'35.2"E
14.0 D SCV (IAF) – BRG 309.67°/14.00 NM SCV	47°50'23.4"N 026°07'12.9"E
18.0 D SCV – BRG 157.10°/18.00 NM SCV	47°23'07.0"N 026°29'19.3"E
14.0 D SCV (IAF) – BRG 238.10°/14.00 NM SCV	47°34'17.3"N 026°02'59.3"E
12.0 D SCV – BRG 327.33°/12.00 NM SCV	47°51'04.6"N 026°13'43.5"E
10.0 D SCV – BRG 111.47°/10.00 NM SCV	47°35'43.0"N 026°34'45.6"E
LIVNU (IF) – BRG 157.06°/10.00 NM SCV	47°30'46.3"N 026°25'55.3"E
SCV VOR/DME	46°40'20.4"N 026°21'39.0"E
10.0 D SCV – BRG 308.21°/10.00 NM SCV	47°47'20.2"N 026°11'04.3"E
ROXAV (IF) – BRG 336.93°/12.00 NM SCV	47°51'48.9"N 026°16'29.0"E
SOVEP (FAF) - BRG 336.96°/6.51 NM SCV	47°46'33.7"N 026°18'51.2"E
1.6 D SCV (MAPT) - BRG 336.99° SCV/1.60 NM SCV	47°41'52.2"N 026°20'57.8"E
THR RWY 16	47°41'49.46"N 026°20'59.00"E

Final approach descent angle: 3.00°