

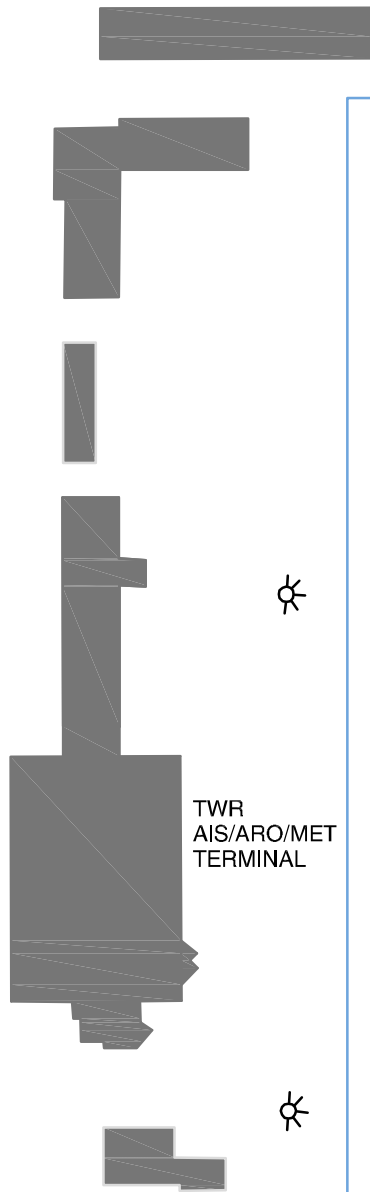
**AIRCRAFT PARKING /  
DOCKING CHART - ICAO**

APRON ELEV  
1361FT

SUCEAVA TWR 129.955  
SUCEAVA TWR ALTN 118.300

**SUCEAVA / Ștefan cel Mare  
(LRSV)**

Changes: TWR Freq/Ch.



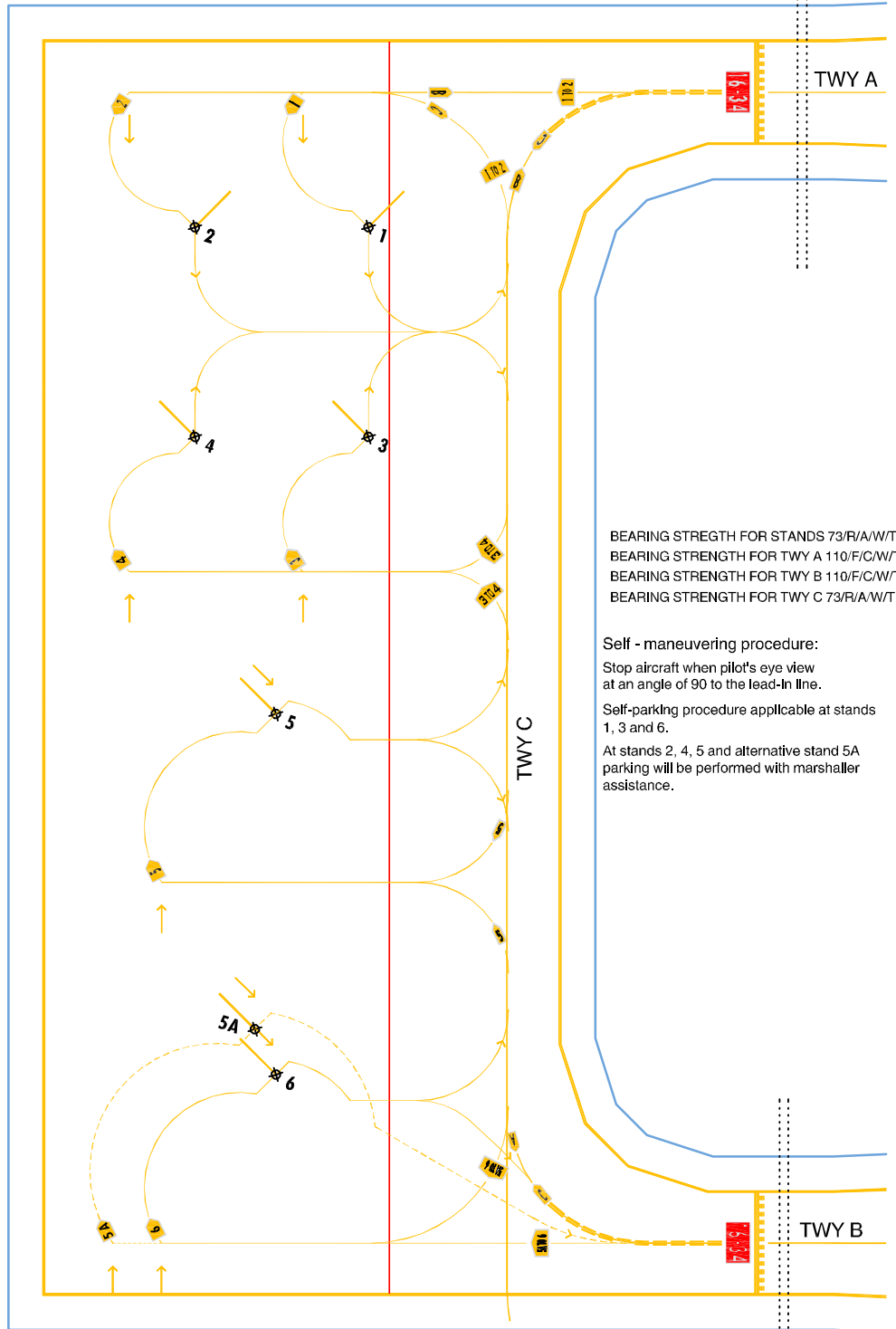
TWY A: 23 m WIDE  
TWY B: 23 m WIDE  
TWY C: 23 m WIDE

**INS COORDINATES FOR AIRCRAFT STANDS**

INS1 47°41'12.86"N 26°21'05.06"E  
INS2 47°41'12.50"N 26°21'03.32"E  
INS3 47°41'11.43"N 26°21'05.70"E  
INS4 47°41'11.08"N 26°21'03.95"E  
INS5 47°41'09.36"N 26°21'05.61"E  
INS6 47°41'06.91"N 26°21'06.71"E  
INS5A 47°41'07.18"N 26°21'06.36"E

**LEGEND:**

- TAXI GUIDANCE LINE
- INS CHECK POINTS
- TO AIRCRAFT STAND
- FLOODLIGHT
- BUILDING
- MOVEMENT SURFACE BOUNDARY
- ATC SERVICE BOUNDARY
- TAXI HOLDING POSITION
- ENHANCED TAXIWAY CENTRE LINE MARKING
- SAFETY ZONE MARKING



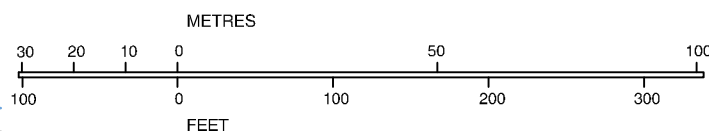
BEARING STRENGTH FOR STANDS 73/R/A/W/T  
BEARING STRENGTH FOR TWY A 110/F/C/W/T  
BEARING STRENGTH FOR TWY B 110/F/C/W/T  
BEARING STRENGTH FOR TWY C 73/R/A/W/T

**Self - maneuvering procedure:**

Stop aircraft when pilot's eye view at an angle of 90 to the lead-in line.

Self-parking procedure applicable at stands 1, 3 and 6.

At stands 2, 4, 5 and alternative stand 5A parking will be performed with marshaller assistance.



Stand no.	Aircraft	Maximum Aircraft Type
1 - 4	Aircraft with wingspan = 29m (Code letter C)	ATR 72 / SAAB 2000
5 - 6	Aircraft with wingspan = 36m (Code letter C)	A 321 / B 737
5A	Aircraft with wingspan = 52m (Code letter C)	B767 / C 17