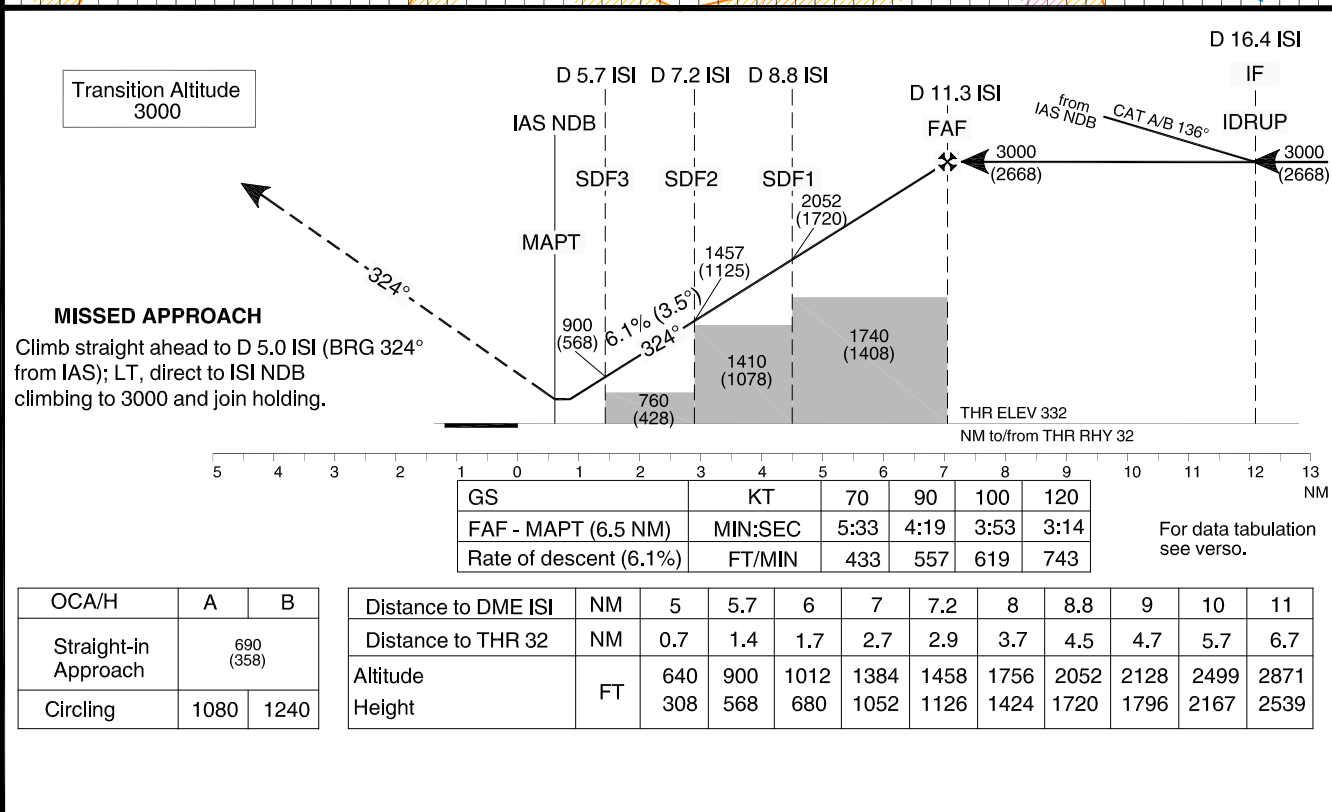
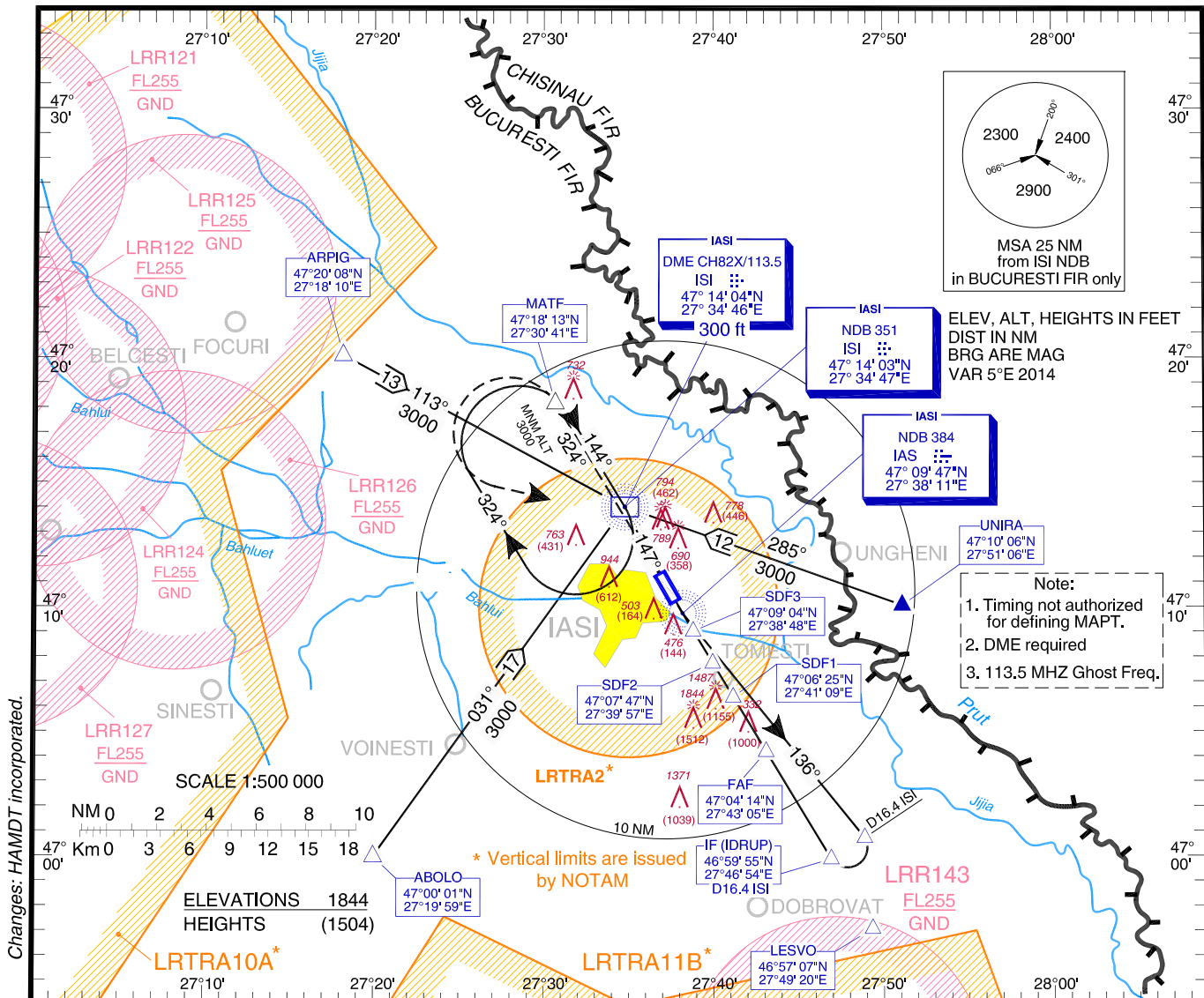


**INSTRUMENT APPROACH
CHART - ICAO**

AERODROME ELEV. 411 FT
HEIGHTS RELATED TO THR ELEV 332 FT

IASI Tower 119.955
IASI Tower ALTN 119.200

IAȘI / Iași (LRIA)
NDB
RWY 32
CAT A, B



IAȘI / Iași (LRJA)
NDB RWY 32, CAT A, B

AERONAUTICAL DATA TABULATION

NDB approach CAT A, B to RWY 32 from ABOLO, ARPIG, UNIRA	
Fix/Point	Coordinates
LEVSO	46°57'07.1"N 027°49'19.8"E
ABOLO (IAF) – BRG 30.74° ISI NDB	47°00'01.1"N 027°19'58.7"E
ARPIG (IAF) – BRG 113.24° ISI NDB	47°20'08.1"N 027°18'10.0"E
UNIRA – BRG 284.76° ISI NDB	47°10'06.0"N 027°51'06.0"E
ISI NDB (IAF)	47°14'03.4"N 027°34'46.8"E
IAS NDB (MAPT) - BRG 146.65° ISI NDB	47°09'46.6"N 027°38'10.6"E
16.4 D ISI - Outbound 136.00° IAS NDB	47°00'46.0"N 027°48'51.8"E
IDRUP (IF) 16.4 D ISI - Inbound 324° IAS NDB	46°59'55.0"N 027°46'54.3"E
11.3 D ISI (FAF)	47°04'14.3"N 027°43'05.3"E
8.8 D ISI (SDF1)	47°06'25.1"N 027°41'09.4"E
7.2 D ISI (SDF2)	47°07'47.3"N 027°39'56.5"E
5.7 D ISI (SDF3)	47°09'04.3"N 027°38'48.2"E
THR RWY 32	47°10'15.64"N 027°37'44.81"E
5.0 D ISI (MATF) – Outbound 323.90° IAS NDB	47°18'12.6"N 027°30'40.6"E

Final approach descent angle: 3.50°