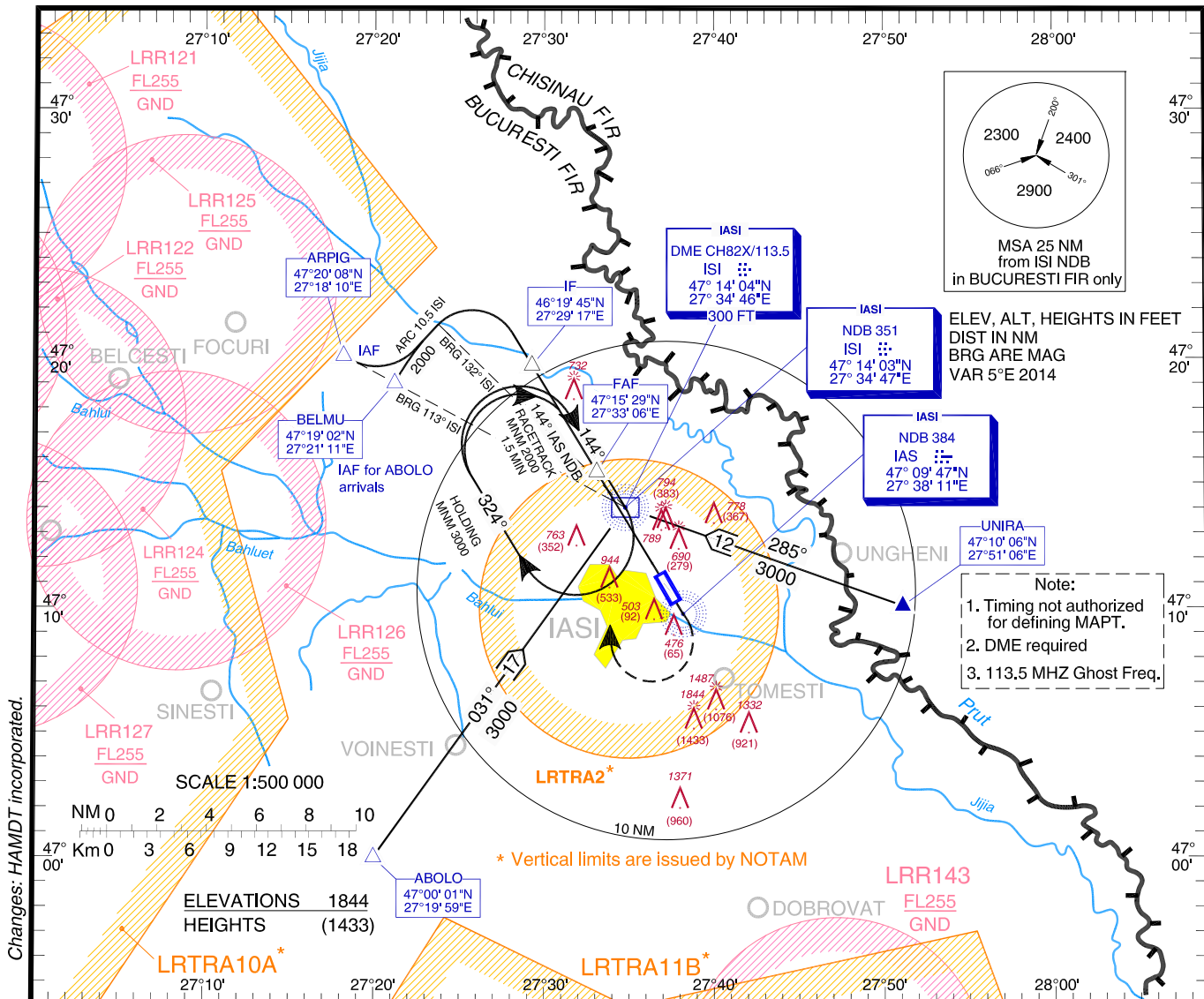


**INSTRUMENT APPROACH  
CHART - ICAO**

**AERODROME ELEV. 411 FT**  
HEIGHTS RELATED TO THR ELEV

IASI Tower 119.955  
IASI Tower ALTN 119.200

**IAȘI / Iași (LRIA)**  
**NDB**  
**RWY 14**  
**CAT C, D**

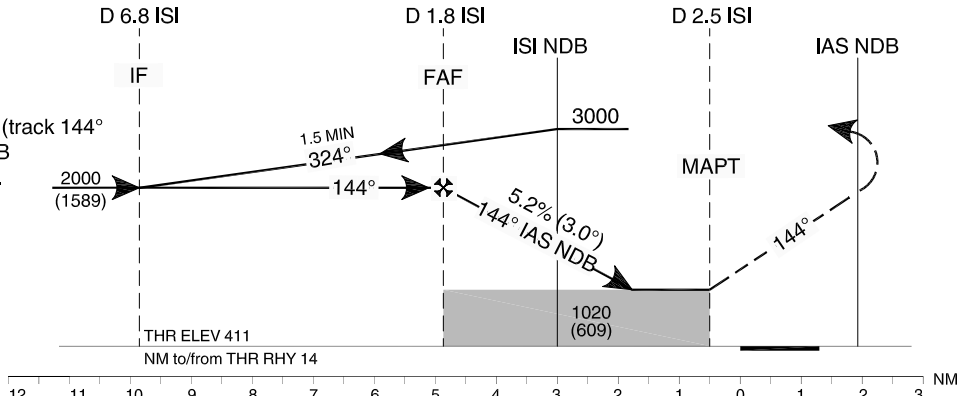


Changes: HAMDT incorporated.

Transition Altitude  
3000

**MISSED APPROACH**

Climb straight ahead to IAS NDB (track 144° to IAS NDB); RT, direct to ISI NDB climbing to 3000 and join holding. IAS max. 190 KT during turn.



OCA/H	C	D
Straight-in Approach	1020 (609)	
Circling	1670	2240

GS	KT	100	120	140	160
FAF - MAPT (4.3 NM)	MIN:SEC	2:35	2:09	1:51	1:37
Rate of descent (5.2%)	FT/MIN	531	637	743	849

Distance to/from DME ISI	NM	1/	/1
Distance to THR 14	NM	4	2
Altitude	FT	1730	1112
Height		(1319)	(701)

For data tabulation see verso.

IAȘI / Iași (LRIA)  
NDB RWY 14, CAT C, D

AERONAUTICAL DATA TABULATION

NDB approach CAT C, D to RWY 14 from ABOLO, ARPIG, UNIRA	
Fix/Point	Coordinates
<b>ABOLO</b> – BRG 30.74° ISI NDB	47°00'01.1"N 027°19'58.7"E
<b>ARPIG</b> (IAF) – BRG 113.24° ISI NDB	47°20'08.1"N 027°18'10.0"E
<b>UNIRA</b> – BRG 284.76° ISI NDB	47°10'06.0"N 027°51'06.0"E
<b>BELMU</b> (IAF) – BRG 113.24° ISI NDB / 10.5NM ISI DME	47°19'02.0"N 027°21'11.0"E
<b>6.8 D ISI DME</b> (IF)	47°19'45.3"N 027°29'16.8"E
<b>ISI NDB</b> (IAF)	47°14'03.4"N 027°34'46.9"E
<b>1.8 D ISI DME</b> (FAF)	47°15'29.1"N 027°33'05.7"E
<b>2.5 D ISI DME</b> (MAPT)	47°11'48.7"N 027°36'22.1"E
<b>THR RWY 14</b>	47°11'22.09"N 027°36'45.73"E
<b>IAS NDB</b> (MATF)	47°09'46.6"N 027°38'10.6"E

Final approach descent angle: 3.00 <sup>0</sup>
---