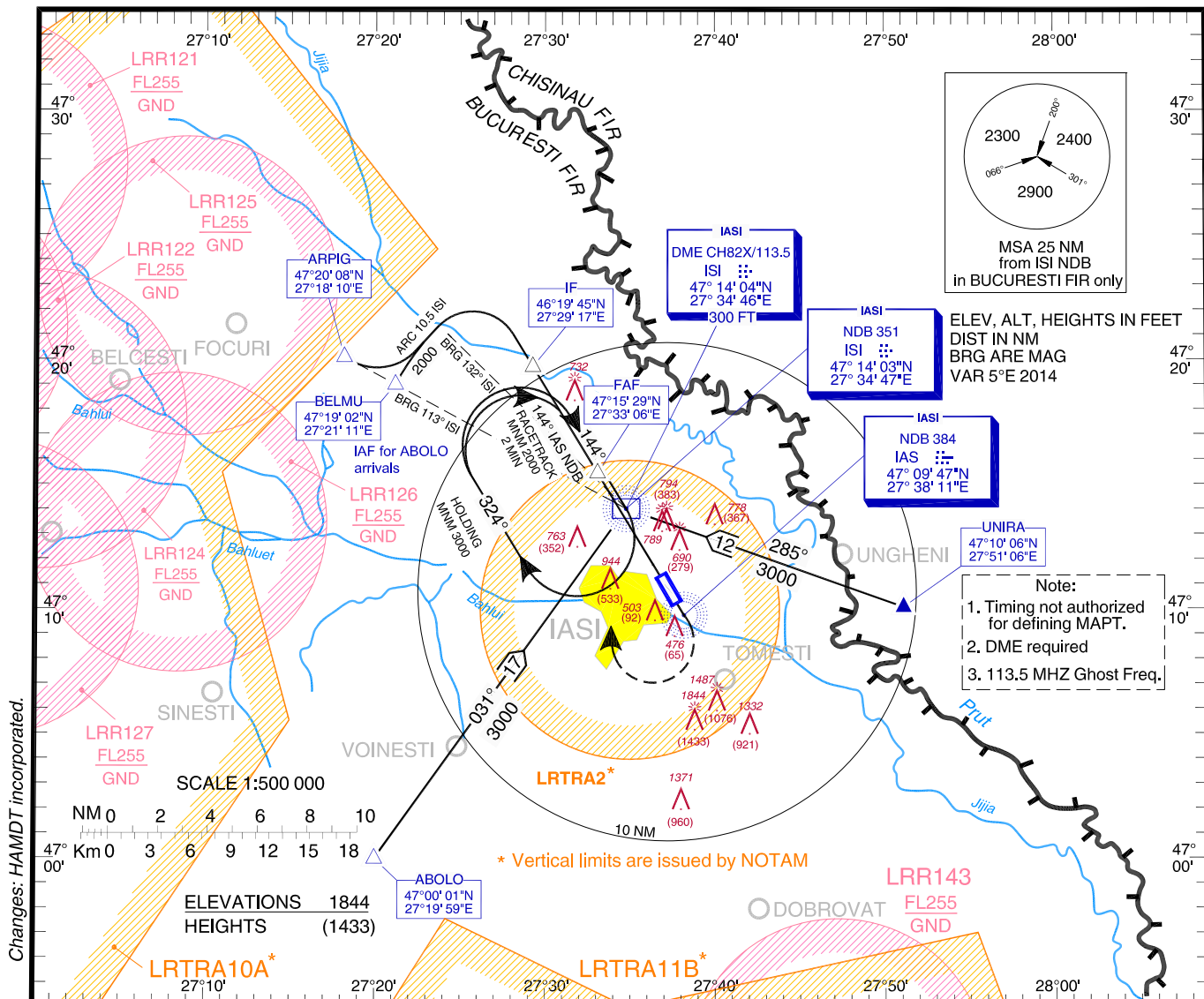


**INSTRUMENT APPROACH
CHART - ICAO**

AERODROME ELEV. 411 FT
HEIGHTS RELATED TO THR ELEV

IASI Tower 119,955
IASI Tower ALTN 119,200

IASI / Iași (LRIA)
NDB
RWY 14
CAT A, B



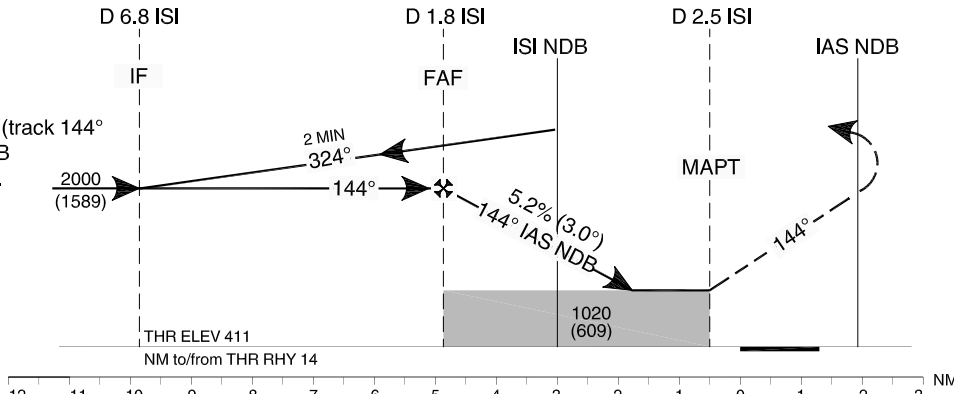
Transition Altitude
3000

MISSED APPROACH

Climb straight ahead to IAS NDB (track 144° to IAS NDB); RT, direct to ISI NDB climbing to 3000 and join holding. IAS max. 190 KT during turn.

OCA/H	A	B
Straight-in Approach	1020 (609)	
Circling	1080	1240

GS	KT	70	90	100	120
FAF - MAPT (4.3 NM)	MIN:SEC	3:41	2:52	2:35	2:09
Rate of descent (5.2%)	FT/MIN	371	478	531	637



Distance to/from DME ISI	NM	1/	/1
Distance to THR 14	NM	4	2
Altitude	FT	1730	1112
Height		(1319)	(701)

For data tabulation see verso.

IAȘI / Iași (LRIA)
NDB RWY 14, CAT A, B

AERONAUTICAL DATA TABULATION

NDB approach CAT A, B to RWY 14 from ABOLO, ARPIG, UNIRA	
Fix/Point	Coordinates
ABOLO – BRG 30.74° ISI NDB	47°00'01.1"N 027°19'58.7"E
ARPIG (IAF) – BRG 113.24° ISI NDB	47°20'08.1"N 027°18'10.0"E
UNIRA – BRG 284.76° ISI NDB	47°10'06.0"N 027°51'06.0"E
BELMU (IAF) – BRG 113.24° ISI NDB/ 10.5NM ISI DME	47°19'02.0"N 027°21'11.0"E
6.8 D ISI DME (IF)	47°19'45.3"N 027°29'16.8"E
ISI NDB (IAF)	47°14'03.4"N 027°34'46.9"E
1.8 D ISI DME (FAF)	47°15'29.1"N 027°33'05.7"E
2.5 D ISI DME (MAPT)	47°11'48.7"N 027°36'22.1"E
THR RWY 14	47°11'22.09"N 027°36'45.73"E
IAS NDB (MATF)	47°09'46.6"N 027°38'10.6"E

Final approach descent angle: 3.00°