

**STANDARD DEPARTURE CHART  
INSTRUMENT (SID) - ICAO**

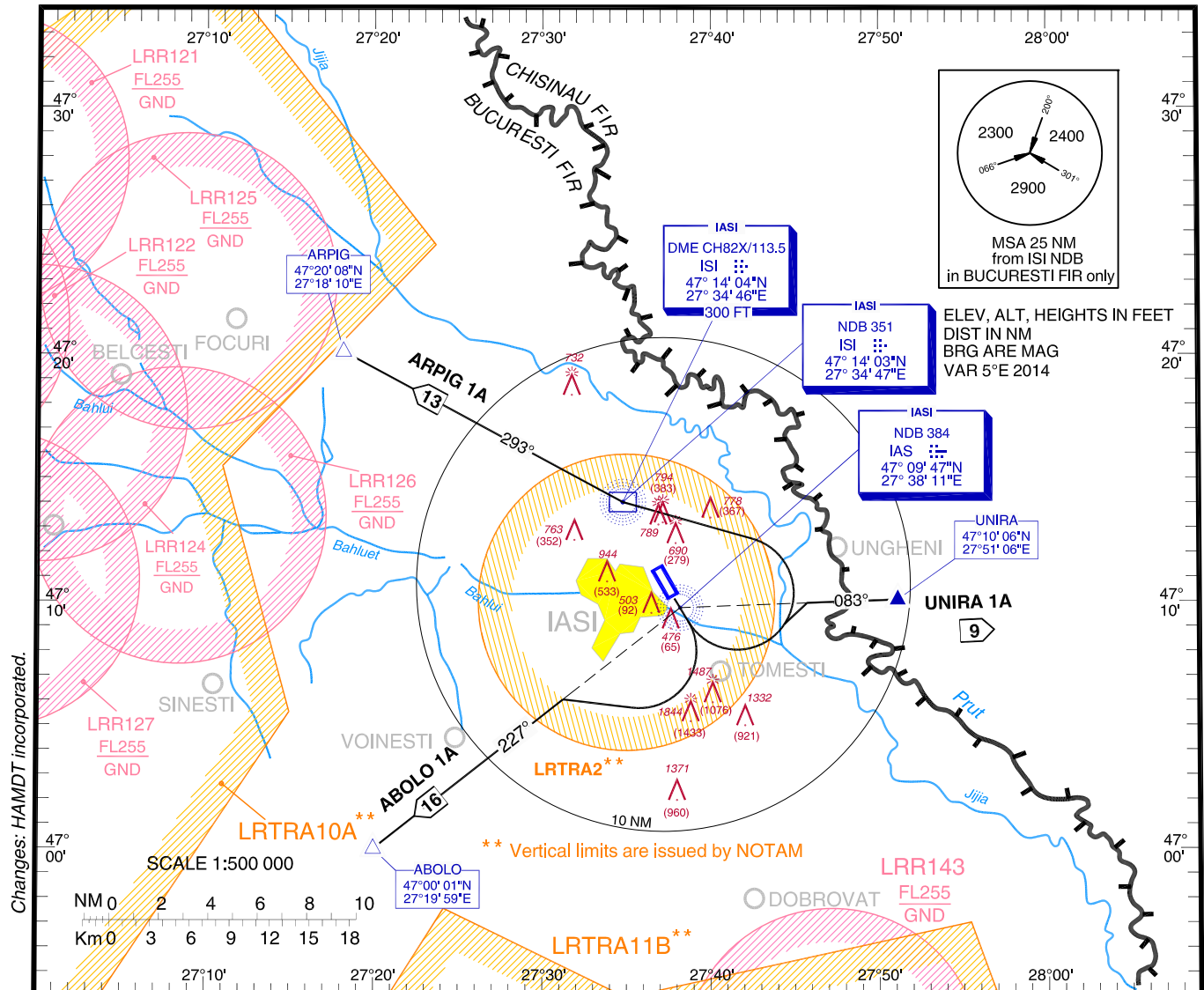
Transition Altitude  
3000

IASI Tower 119.955  
IASI Tower ALTN 119.200  
Bacau SECTOR 128.610  
Bacau SECTOR ALTN 125.725

**IAȘI / Iași (LRIA)**

**RWY 14**

**ABOLO 1A, ARPIG 1A, UNIRA 1A**



SID Identifier	Description
ABOLO 1A	On RWY heading climb to 1000 or IAS NDB, whichever is later; RT, intercept track 227° from IAS NDB to ABOLO. Departure turn limited to max 210 KIAS. Increased PDG* 5.9% until 2200 due to obstacles. Increased PDG* 4.2% until ABOLO due to airspace structure.
ARPIG 1A	On RWY heading climb to 1000 or IAS NDB, whichever is later; LT, direct to ISI NDB; on track 293° from ISI NDB to ARPIG. Departure turn limited to max 210 KIAS. Increased PDG* 5.7% until 1600 due to obstacles.
UNIRA 1A	On RWY heading climb to 1000 or IAS NDB, whichever is later; LT, intercept track 083° from IAS NDB to UNIRA. Departure turn limited to max 210 KIAS. Increased PDG* 8.3% until UNIRA due to airspace structure. Increased PDG* 5.7% until 1600 due to obstacles.

\* If unable to comply, contact ATC before departure.