

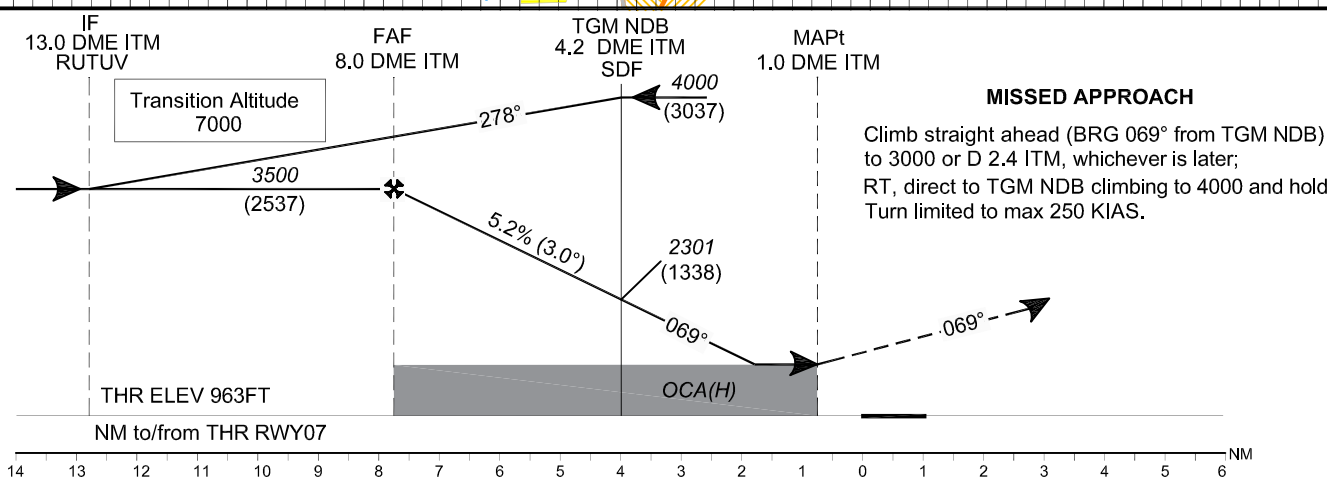
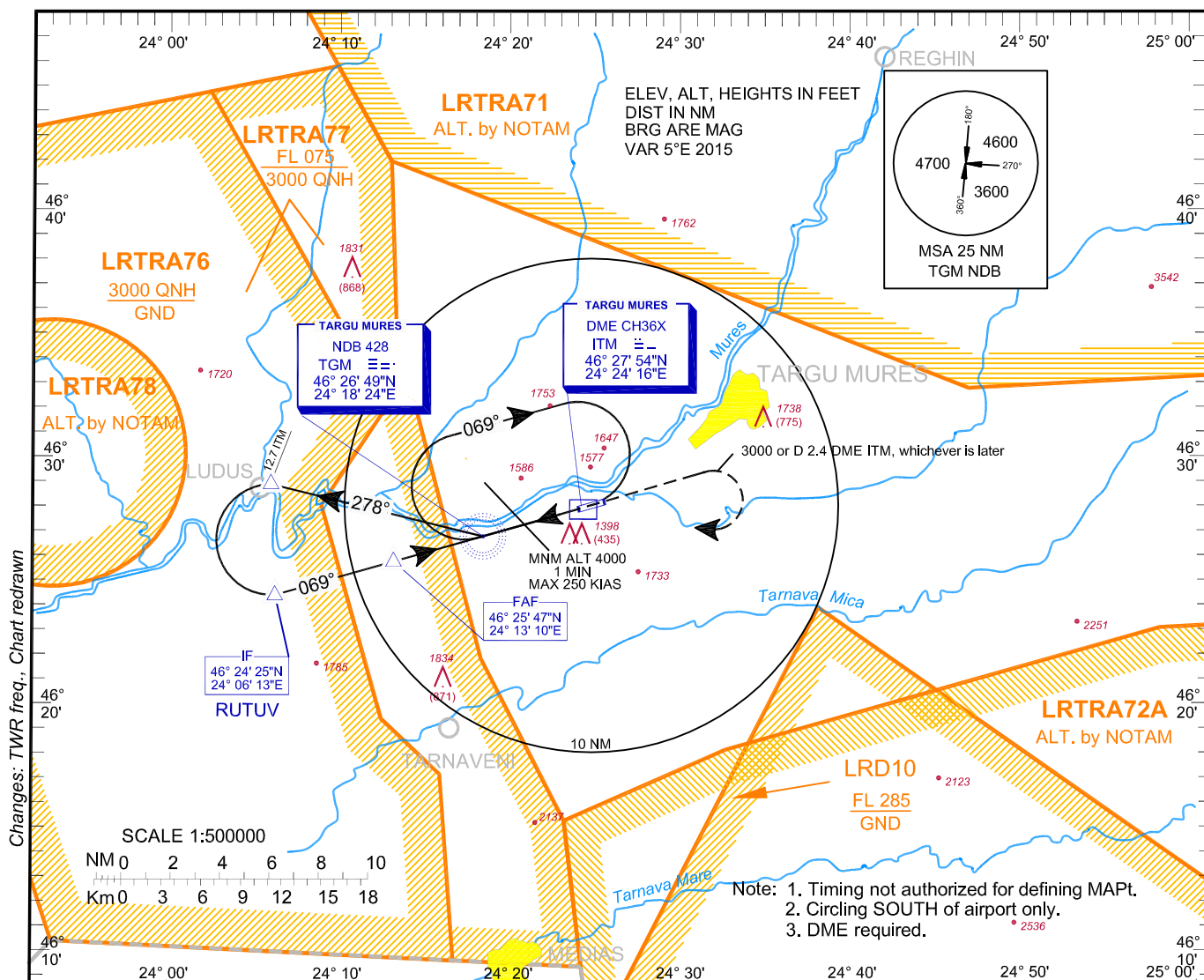
**INSTRUMENT
APPROACH
CHART - ICAO**

AERODROME
ELEV. **963 ft**
HEIGHTS RELATED
TO AD ELEV

TARGU MURES ATIS 125.950
NAPOC APPROACH 126.425
NAPOC NORTH APPROACH 126.425
NAPOC SOUTH APPROACH 119.675

TARGU MURES TOWER 119.180
TARGU MURES TOWER ALTN 120.325

**TÂRGU MUREȘ/
Transilvania-
Târgu Mureș (LRTM)
NDB RWY 07 CAT C / D**



OCA/H	C	D
Straight-in approach	1720 (757)	
Circling	2200	2300

GS	kts	100	120	140	160
FAF-MAPT 7.0 NM	min:s	4:11	3:29	2:59	2:37
Rate of descent	ft/min	531	637	743	849

Dist to DME ITM	NM	7	6	5	4.2 TGM	4	3	2
Dist to THR 07	NM	6.8	5.8	4.8	4.0	3.8	2.8	1.8
Altitude (Height)	ft	3190 (2227)	2871 (1908)	2553 (1590)	2301 (1338)	2234 (1271)	1916 (953)	1597 (634)

For data tabulation see verso.

**TÂRGU MUREŞ / TRANSILVANIA - TÂRGU MUREŞ (LRTM)
NDB CAT C, D RWY 07**

AERONAUTICAL DATA TABULATION

NDB Approach CAT C, D to RWY 07	
Fix/Point	Coordinates
TGM NDB (IAF, SDF)	46°26'48.9"N 024°18'23.7"E
12.7 D ITM – BRG 278.49° TGM outbound	46°28'53.9"N 024°05'57.7"E
RUTUV / 13.0 D ITM (IF) - BRG 068.78° TGM	46°24'24.7"N 024°06'13.1"E
8.0 D ITM (FAF) – BRG 068.89° TGM	46°25'47.2"N 024°13'09.9"E
1.0 D ITM (MAPT)	46°27'41.6"N 024°22'51.5"E
THR RWY 07	46°27'55.01"N 024°24'00.25"E

Final approach descent angle: 3.00°