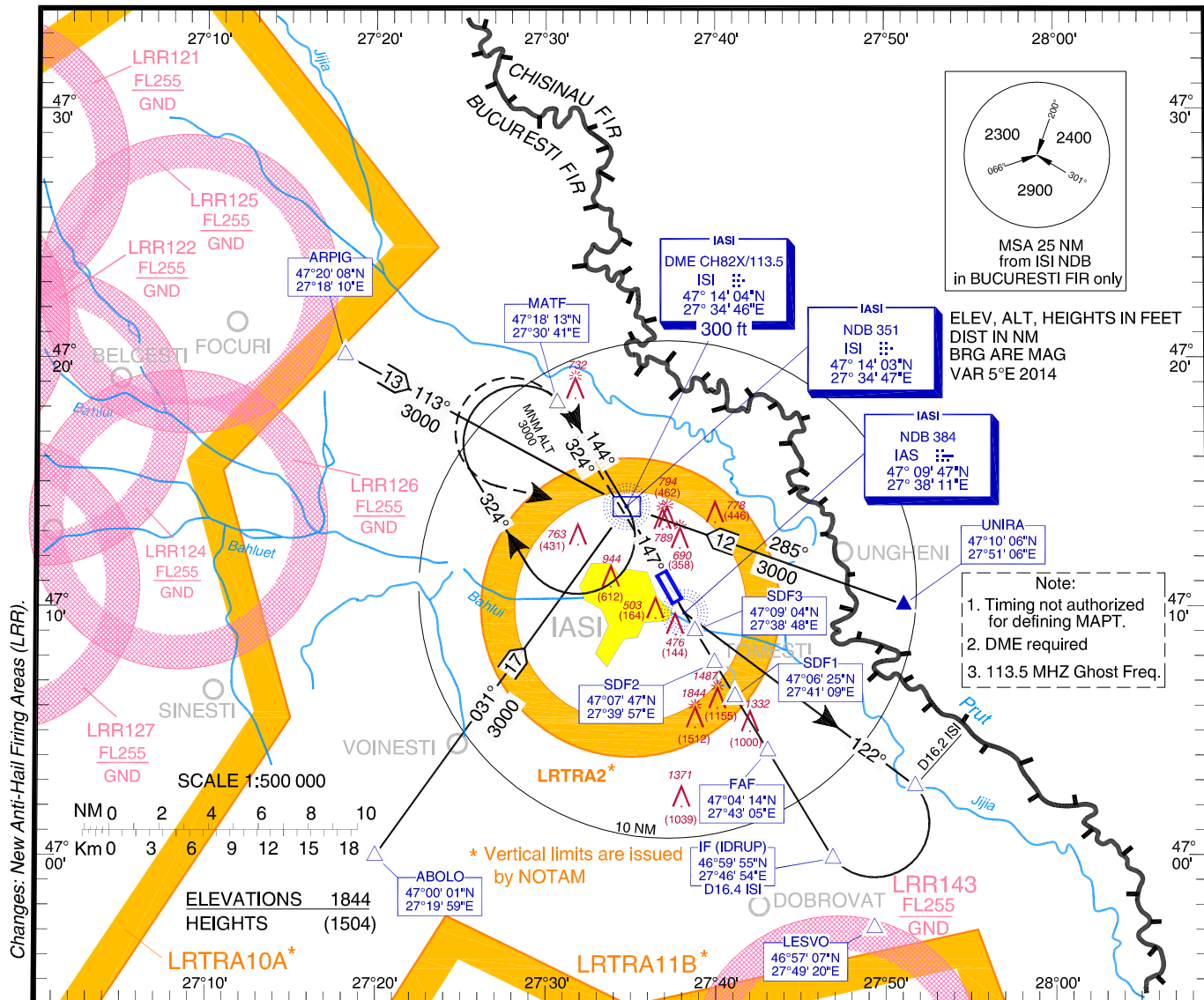


**INSTRUMENT APPROACH
CHART - ICAO**

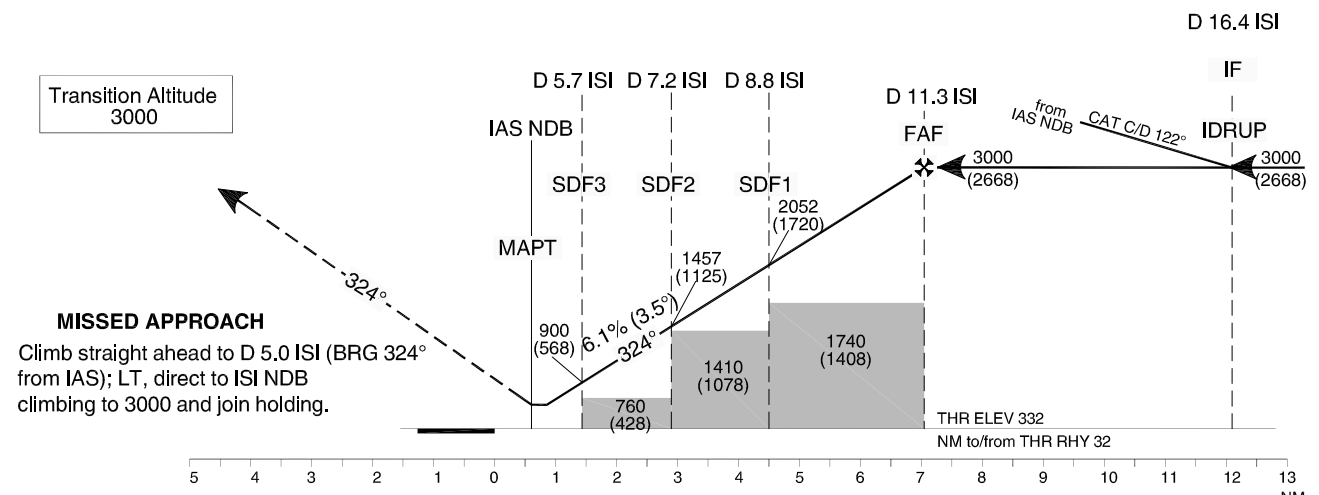
AERODROME ELEV. 411 FT
HEIGHTS RELATED TO THR ELEV 332 FT

IASI Tower 119.2

IAȘI / Iași (LRIA)
NDB
RWY 32
CAT C, D



Charges: New Anti-Hail Firing Areas (LRR).



MISSED APPROACH
Climb straight ahead to D 5.0 ISI (BRG 324° from IAS); LT, direct to ISI NDB climbing to 3000 and join holding.

| | | | | | |
|------------------------|---------|------|------|------|------|
| GS | KT | 100 | 120 | 140 | 160 |
| FAF - MAPT (6.5 NM) | MIN:SEC | 3:53 | 3:14 | 2:46 | 2:26 |
| Rate of descent (6.1%) | FT/MIN | 619 | 743 | 866 | 990 |

| | | | | | | | | | | | | | | |
|----------------------|-----------|------|---------------------|----|-----|-----|------|------|------|------|------|------|------|------|
| OCA/H | C | D | Distance to DME ISI | NM | 5 | 5.7 | 6 | 7 | 7.2 | 8 | 8.8 | 9 | 10 | 11 |
| Straight-in Approach | 690 (358) | | Distance to THR 32 | NM | 0.7 | 1.4 | 1.7 | 2.7 | 2.9 | 3.7 | 4.5 | 4.7 | 5.7 | 6.7 |
| Circling | 1670 | 2240 | Altitude | FT | 640 | 900 | 1012 | 1384 | 1458 | 1756 | 2052 | 2128 | 2499 | 2871 |
| | | | Height | FT | 308 | 568 | 680 | 1052 | 1126 | 1424 | 1720 | 1796 | 2167 | 2539 |

For data tabulation see verso.

IAȘI / Iași (LRJA)
NDB RWY 32, CAT C, D

AERONAUTICAL DATA TABULATION

| NDB approach CAT C, D to RWY 32 from ABOLO, ARPIG, UNIRA | |
|--|------------------------------|
| Fix/Point | Coordinates |
| LESVO | 46°57'07.1"N 027°49'19.8"E |
| ABOLO (IAF) – BRG 30.74° ISI NDB | 47°00'01.1"N 027°19'58.7"E |
| ARPIG (IAF) – BRG 113.24° ISI NDB | 47°20'08.1"N 027°18'10.0"E |
| UNIRA – BRG 284.76° ISI NDB | 47°10'06.0"N 027°51'06.0"E |
| ISI NDB (IAF) | 47°14'03.4"N 027°34'46.8"E |
| IAS NDB (MAPT) - BRG 146.65° ISI NDB | 47°09'46.6"N 027°38'10.6"E |
| 16.2 D ISI - Outbound 121.90° IAS NDB | 47°02'48.6"N 027°51'45.1"E |
| IDRUP (IF) 16.4 D ISI- Inbound 324° IAS NDB | 46°59'55.0"N 027°46'54.3"E |
| 11.3 D ISI (FAF) | 47°04'14.3"N 027°43'05.3"E |
| 8.8 D ISI (SDF1) | 47°06'25.1"N 027°41'09.4"E |
| 7.2 D ISI (SDF2) | 47°07'47.3"N 027°39'56.5"E |
| 5.7 D ISI (SDF3) | 47°09'04.3"N 027°38'48.2"E |
| THR RWY 32 | 47°10'15.64"N 027°37'44.81"E |
| 5.0 D ISI (MATF) – Outbound 323.90° IAS NDB | 47°18'12.6"N 027°30'40.6"E |

Final approach descent angle: 3.50°