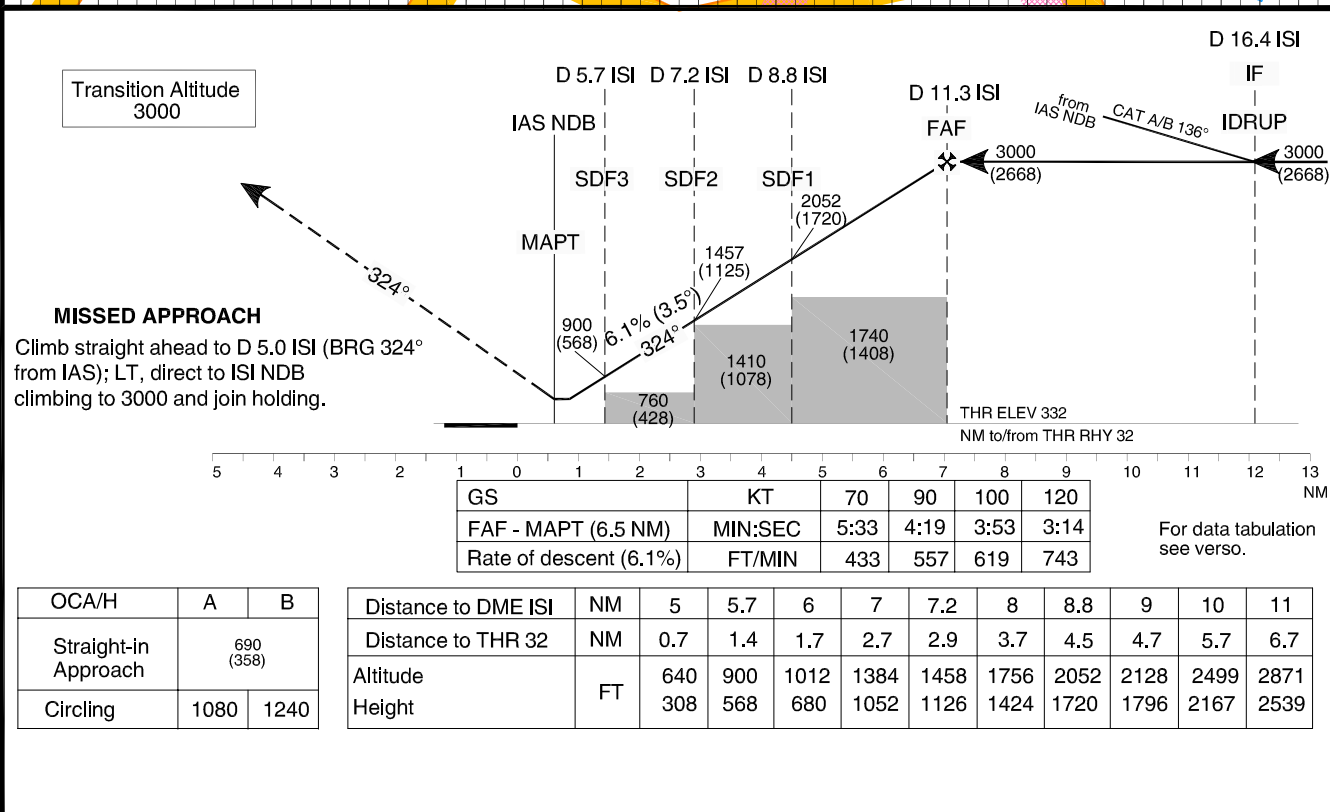
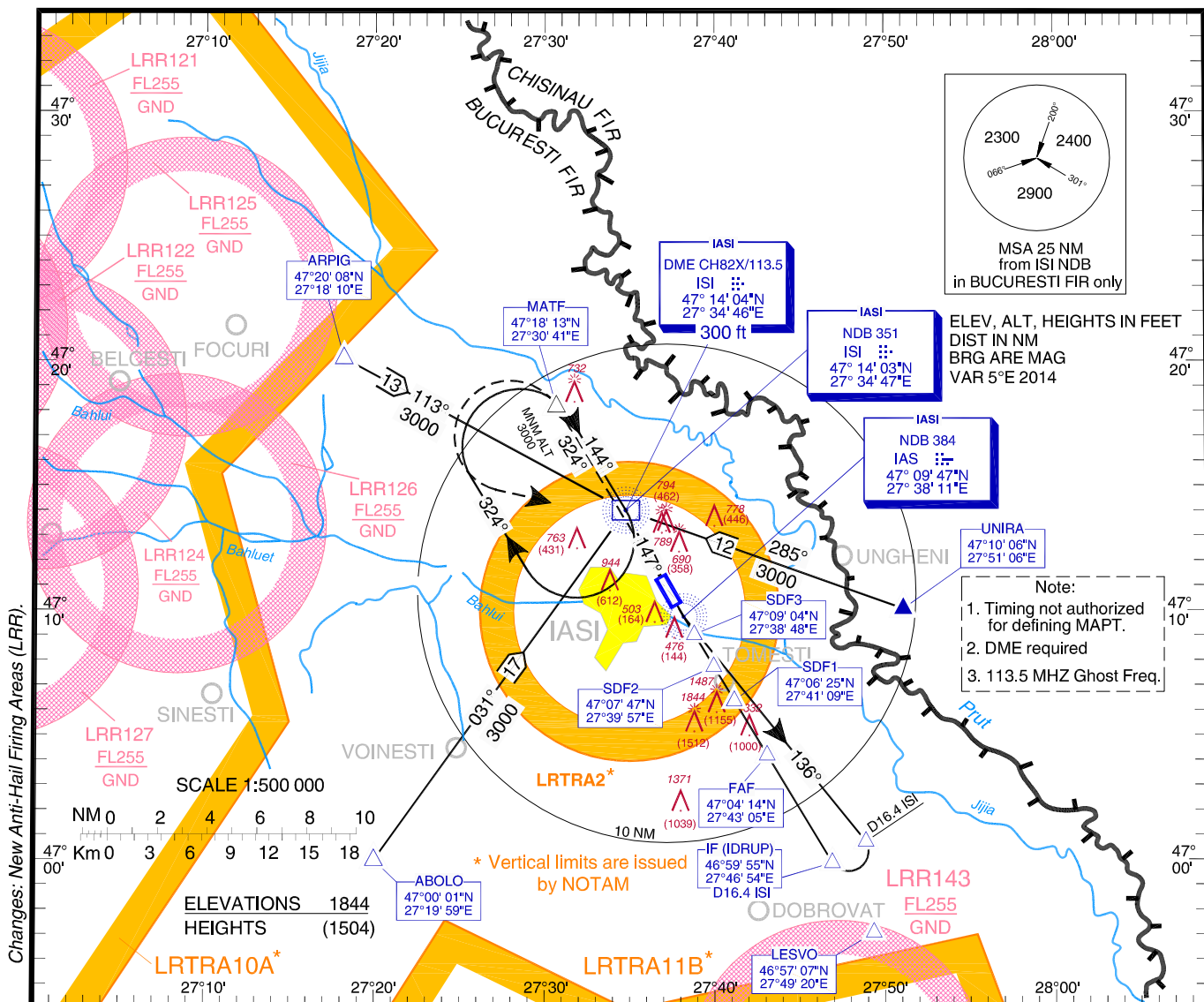


**INSTRUMENT APPROACH  
CHART - ICAO**

**AERODROME ELEV. 411 FT**  
HEIGHTS RELATED TO THR ELEV 332 FT

IASI Tower 119.2

**IASI / Iași (LRIA)**  
**NDB**  
**RWY 32**  
**CAT A, B**



IAȘI / Iași (LRJA)  
NDB RWY 32, CAT A, B

AERONAUTICAL DATA TABULATION

NDB approach CAT A, B to RWY 32 from ABOLO, ARPIG, UNIRA	
Fix/Point	Coordinates
<b>LEVSO</b>	46°57'07.1"N 027°49'19.8"E
<b>ABOLO</b> (IAF) – BRG 30.74° ISI NDB	47°00'01.1"N 027°19'58.7"E
<b>ARPIG</b> (IAF) – BRG 113.24° ISI NDB	47°20'08.1"N 027°18'10.0"E
<b>UNIRA</b> – BRG 284.76° ISI NDB	47°10'06.0"N 027°51'06.0"E
<b>ISI NDB</b> (IAF)	47°14'03.4"N 027°34'46.8"E
<b>IAS NDB</b> (MAPT) - BRG 146.65° ISI NDB	47°09'46.6"N 027°38'10.6"E
<b>16.4 D ISI</b> - Outbound 136.00° IAS NDB	47°00'46.0"N 027°48'51.8"E
<b>IDRUP</b> (IF) 16.4 D ISI - Inbound 324° IAS NDB	46°59'55.0"N 027°46'54.3"E
<b>11.3 D ISI</b> (FAF)	47°04'14.3"N 027°43'05.3"E
<b>8.8 D ISI</b> (SDF1)	47°06'25.1"N 027°41'09.4"E
<b>7.2 D ISI</b> (SDF2)	47°07'47.3"N 027°39'56.5"E
<b>5.7 D ISI</b> (SDF3)	47°09'04.3"N 027°38'48.2"E
<b>THR RWY 32</b>	47°10'15.64"N 027°37'44.81"E
<b>5.0 D ISI</b> (MATF) – Outbound 323.90° IAS NDB	47°18'12.6"N 027°30'40.6"E

Final approach descent angle: 3.50°