

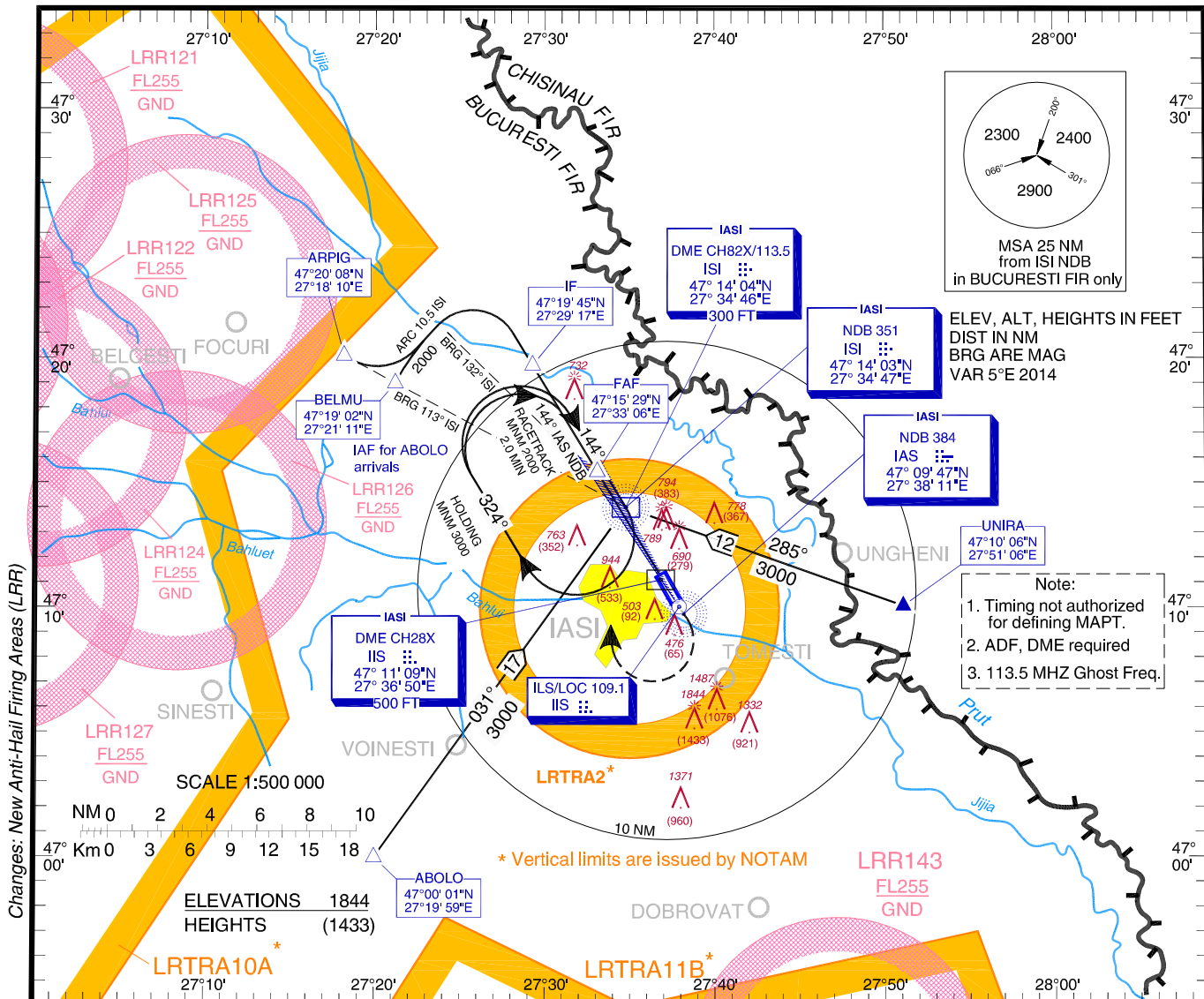
**INSTRUMENT APPROACH  
CHART - ICAO**

**AERODROME ELEV. 411 FT**  
HEIGHTS RELATED TO THR ELEV

IASI Tower 119.2

IAȘI / Iași (LRIA)

**ILS  
RWY 14  
CAT A, B**

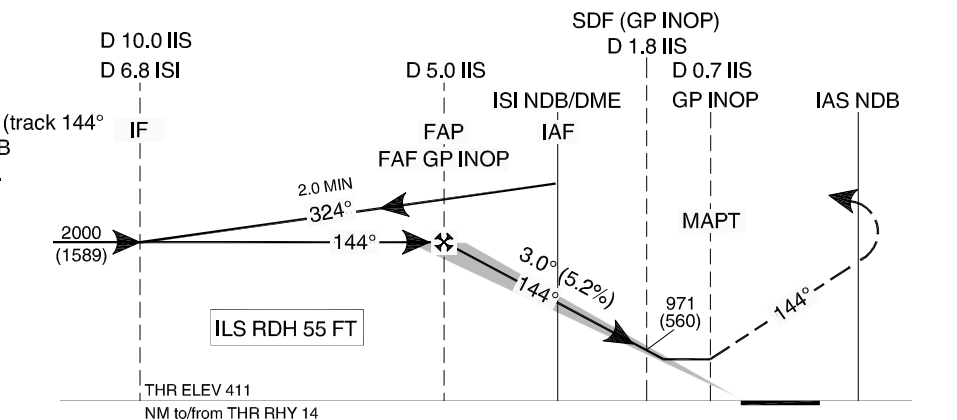


Transition Altitude  
3000

**MISSED APPROACH**

Climb straight ahead to IAS NDB (track 144° to IAS NDB); RT, direct to ISI NDB climbing to 3000 and join holding. IAS max. 190 KT during turn.

OCA(H)	A	B
ILS CAT I	627 (216)	639 (228)
ILS CAT II	539 (128)	556 (145)
GP INOP	900 (489)	
Circling	1080	1240



GS	KT	70	90	100	120
FAF - MAPT (4.3 NM)	MIN:SEC	3:41	2:52	2:35	2:09
Rate of descent (5.2%)	FT/MIN	371	478	531	637

Distance to DME IIS	NM	4	3	2	1.8	1
Distance to THR 14	NM	3.8	2.8	1.8	1.6	0.8
Altitude (Height)	FT	1672 (1261)	1353 (942)	1035 (624)	971 (560)	716 (305)

For data tabulation see verso.

IAȘI / Iași (LRIA)  
ILS RWY 14, CAT A, B

AERONAUTICAL DATA TABULATION

ILS approach CAT A, B to RWY 14 from ABOLO, ARPIG, UNIRA	
Fix/Point	Coordinates
<b>ABOLO</b> – BRG 30.74° // 17.30NM ISI NDB	47°00'01.1"N 027°19'58.7"E
<b>ARPIG</b> (IAF) – BRG 113.24°/12.8NM ISI NDB	47°20'08.1"N 027°18'10.0"E
<b>UNIRA</b> – BRG 284.76° / 11.81NM ISI NDB	47°10'06.0"N 027°51'06.0"E
<b>BELMU</b> (IAF) – BRG 113.24° ISI NDB / 10.5NM ISI DME	47°19'02.0"N 027°21'11.0"E
<b>ISI NDB</b> (IAF)	47°14'03.4"N 027°34'46.9"E
<b>10.0 D IIS / 6.8 D ISI</b> (IF)	47°19'45.3"N 027°29'16.8"E
<b>5.0 D IIS</b> (FAF/FAP)	47°15'28.9"N 027°33'05.8"E
<b>1.8 D IIS</b> (SDF)	47°12'43.4"N 027°35'33.4"E
<b>0.7 D IIS</b> (MAPt)	47°11'46.9"N 027°36'23.7"E
<b>THR RWY 14</b>	47°11'22.09"N 027°36'45.73"E
<b>IIS LOC</b>	47°10'06.6"N 027°37'52.8"E
<b>IAS NDB</b> (MATF)	47°09'46.6"N 027°38'10.6"E