

AERODROME CHART - ICAO

47° 10' 41" N
027° 37' 23" E
ELEV 411 FT

IASI TOWER 119.2

IASI / Iasi (LRIA)

RWY	DIRECTION	THR	BEARING STRENGTH
14	144°	47°11'22"N 027°36'46"E	PCN 70/F/D/W/T
32	324°	47°10'16"N 027°37'45"E	

TWY A 23 M WIDE, PCN 70/F/D/W/T
TWY B 45 M WIDE, PCN 26/R/D/W/T
APRON PCN 70/F/D/W/T

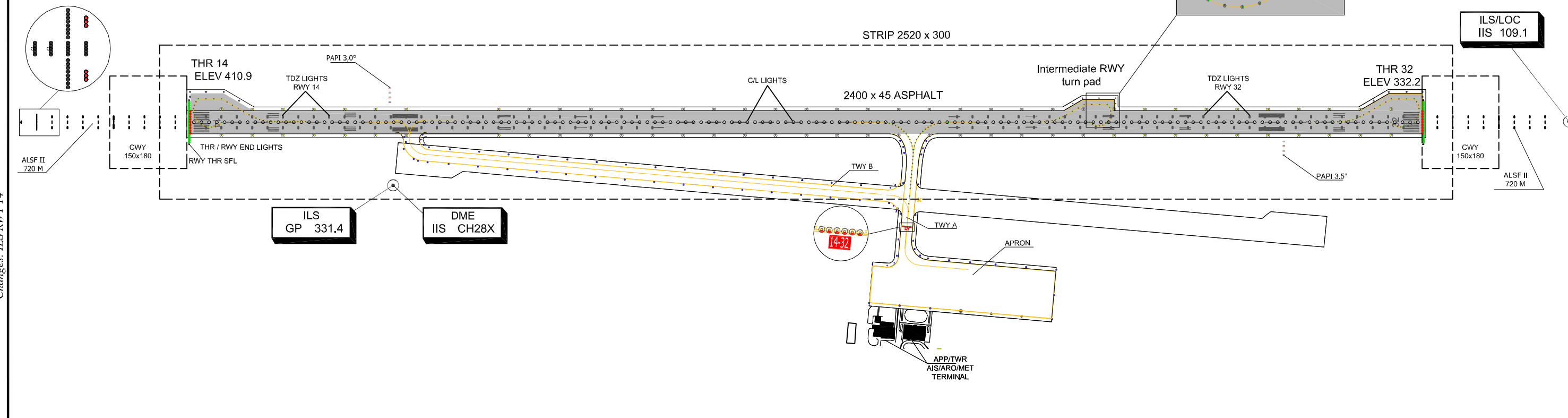
RWY 14: Intermediate RWY turn pad 97 x 21.5 M to the EAST of RWY, 1800 M from RWY THR 14.
RWY turn pad 122 x 33.3 M to the end of RWY, EAST side.

RWY 32: RWY turn pad 122 x 33.3 M to the end of RWY, EAST side.

MARKING / LIGHTING AIDS
RWY 14 / 32 AND EXIT TWY

ELEVATIONS IN FEET
DIMENSIONS IN METRES
BEARINGS ARE MAGNETIC

VAR 5°E 2014



Changes: ILS RWY 14

- RWY edge lights (white/white , yellow/white)
- RWY end lights (red)
- RWY threshold lights (green)
- SFL - sequenced flashing lights (white)
- RWY threshold SFL
- RWY turnpad edge lights (blue)
- PAPI system
- TWY centre line lights (green/green, yellow/green)
- TWY stop bar lights (red)
- TWY / APRON edge lights (blue)